

Fire Service Mechanical Fitter Intermediate Trade Test Mock Practical Test Paper

此文件關於消防機械裝配工工藝測試考題。如有需要索取此文件的中文版本，請致電 2100 9232 與工藝測試中心聯絡。

Disclaimer

No part of this material may be reproduced or transmitted in any form or any means without the written permission of the CIC. Whilst reasonable efforts have been made to ensure the accuracy of the information contained in this material, the CIC nevertheless would encourage readers to seek appropriate independent advice from their professional advisers where possible and readers should not treat or rely on this material as a substitute for such professional advice for taking any relevant actions.

Enquiries

Enquiries on this Material may be made to the Trade Test Centre at:

95, Yue Kwong Road
Aberdeen
Hong Kong

Tel: (852) 2100 9232
Fax: (852) 2100 9249
Email: enquiry@cic.hk
Website: www.cic.hk

© 2015 Construction Industry Council.

Intermediate Trade Test

Job Title : Fire Service Mechanical Fitter

Grade : Semi-skilled Worker

Test questions : Complete the following tasks in the designated location:
(please refer to the drawing of the work)

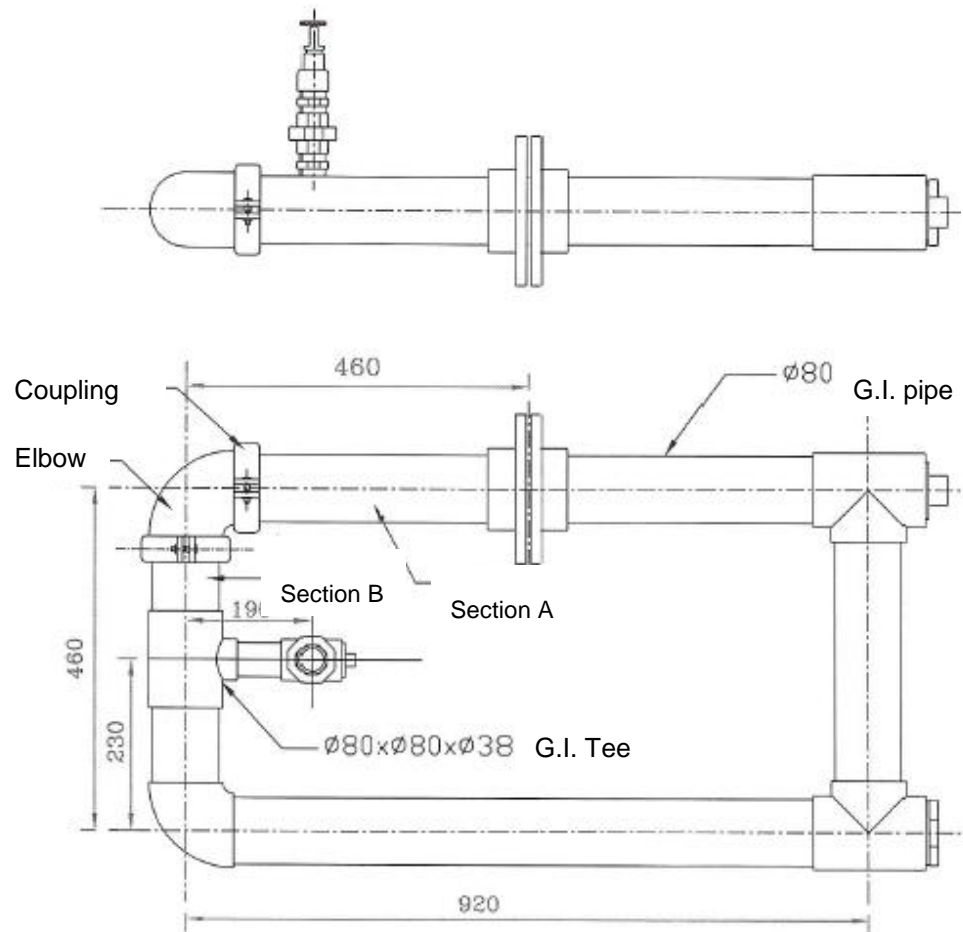
1. Select the right G.I pipe and fittings according to the drawing
2. Refer to the existing works piece measure and cut A & B of the G.I. pipe.
3. Following the requirements of the drawing, process sections A and B of the galvanized pipes. This includes threading, grooving, and connecting assigned fittings.
4. After completing the entire installation and connections, perform a 17-bar (kgf/cm²) hydraulic pressure test. Time limit is 15 minutes.

Time Limit : Three hours

Points to note:

- 1) Before you start, candidate must read the 「Notes for Candidate」 and test paper carefully. If you have any questions, ask an invigilator immediately.
- 2) If candidate has insufficient safety precautions during the test, this test result will be treated as fail.
- 3) After the test, clear up the booth and restore its original condition as instructed by the invigilator.
- 4) Full mark for each test is 100. Passing mark is 80 or above.

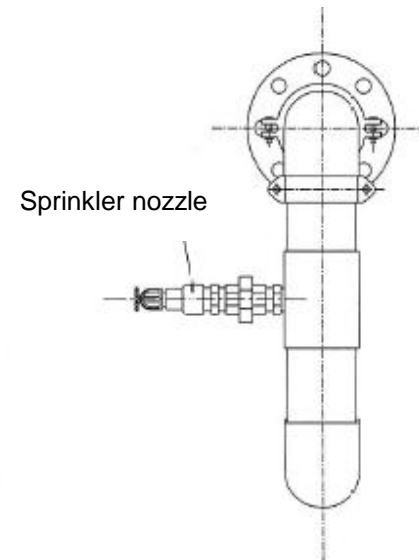
Drawing for Fire Service Mechanical Fitter Practical Test



Work requirements:

1. Sawing, threading, grooving, and connecting of galvanized pipes;
2. Complete sections A and B in the drawing, and connect and install relevant fittings;
3. Install extinguishing shower nozzle and connect relevant fittings;

Note: Please ensure safety while working.



Notes to Candidates:

1. Before test starts, read carefully the relevant diagrams and the descriptions.
2. Candidates must carry out the work according to the diagrams and the descriptions on the test papers.
3. All the safety equipments are provided by the testing workshop and the safety precaution must be followed by candidates.
4. All materials and tools needed for the test are provided by the testing workshop.
5. All the movements of tools & materials and the associated works should be completed by the candidates in the test workshop. The item assessments are according as follows:
 6. 6.1 Interpretation of drawing and work specifications
 - 6.2 Pre-work preparation
 - 6.3 Work procedures
 - 6.4 Accuracy and quality of work
 - 6.5 Speed of work
 - 6.6 Appropriate use and handling of materials
 - 6.7 Proper use of tools and equipment
 - 6.8 Following safety measures
 - 6.9 Post-work clear up