

Data Analysis on Registered Workers

For the period 1/1/2015 to 31/12/2015 (12 months)

Levy income during the period (HK\$): 63,280,175.00
 Equivalent construction work output (HK\$) 210,933,916,666.67

Overall - incl. truck drivers

	RSW	RSS	RGW	All
(1) registered workers at the end of the reporting period	119155	22205	227621	368981
Based on phone survey conducted from October 2015 to January 2016:				
(2) projected nr. of workers engaged in the construction industry	103479	19349	161767	284595
(3) projected nr. of workers NOT engaged in the construction industry	16387	3068	68341	87796
Based on survey of latent workers:				
(4) projected nr. of latent workers who may return to the construction industry	1886	776	10237	12899
(5) projected nr. of latent workers with higher potential to return to the industry				
Enough work to do	494	126	2344	2964
Higher wage	359	226	2009	2594
Could find work	45	126	1052	1223
Could not find other job opportunities	0	45	1005	1050
Better fringe benefits	135	0	622	757
Total	1033	523	7032	8588

	RSW	Ratio	RSS	Ratio	RGW	RGW*	Ratio	All	All *	Ratio
Registered Workers (excluding truck drivers about 16000)	84869	26.03%	20709	6.35%	220412	(203932)	67.61%	325990	(309510)	
start	103038	29.20%	22205	6.29%	227621	(210602)	64.51%	352864	(335845)	
end	54733	45.33%	7685	6.36%	58338	(53976)	48.31%	120756	(116394)	
total renewal	5667	11.57%	2350	4.80%	40980	(37916)	83.64%	48997	(45933)	
new	6251	16.14%	1797	4.64%	30677	(28383)	79.22%	38725	(36431)	
expired	18753	112.96%	943	5.68%	-3094	(-2863)	-18.64%	16602	(16833)	
renewal of expired registration from previous periods										

	RSW	Ratio	RSS	Ratio	RGW	RGW*	Ratio	All	All *	Ratio
DAR > 0	57168	29.27%	15036	7.70%	123077	(118523)	63.03%	195281	(190727)	
against nr. of registered workers	103038	55.48%	22205	67.71%	227621	(210602)	54.07%	352864	(335845)	55.34%

	RSW	Ratio	RSS	Ratio	RGW	RGW*	Ratio	All	All *	Ratio
DAR = 0	46496	28.90%	7381	4.59%	107031	(94380)	66.52%	160908	(148257)	
against nr. of registered workers	103038	45.13%	22205	33.24%	227621	(210602)	47.02%	352864	(335845)	45.60%

	RSW	RSS	RGW/RGW*	All/All*
DAR > 0	2.60	2.47	2.22	2.35
average working days per week				

Age Profile (dates of data extraction for registered workers and age profile are different thus the numbers may differ slightly due to the dynamic nature of the data set)

	RSW	Ratio	RSS	Ratio	RGW	Ratio	All	Ratio
Below 20	2	0.00%	136	0.61%	1010	0.44%	1148	0.33%
20 - 29	2473	2.40%	6033	27.17%	44097	19.37%	52603	14.91%
30 - 39	16049	15.58%	5389	24.27%	40990	18.01%	62428	17.69%
40 - 49	25705	24.95%	4384	19.74%	54182	23.80%	84271	23.88%
50 - 59	39231	38.07%	4224	19.02%	57633	25.32%	101088	28.65%
60 or above	19578	19.00%	2040	9.19%	29710	13.05%	51328	14.55%
Total	103038	100.00%	22206	100.00%	227622	100.00%	352866	100.00%

Phone Survey conducted from October 2015 to January 2016 - 47,536 samples drawn from RGW and 24 trades with 9,427 successful interviews

	RSW	RSS	RGW	All
DAR > 0	5.27	5.09	5.01	5.09
average working days per week with card record	4.35	4.11	4.21	4.24

	Ratio	Ratio	Ratio	Ratio
DAR = 0	71.28%	58.44%	36.15%	47.91%
working in construction industry	5.24	5.11	4.66	4.86
average working days per week with card record	1.96	2.14	1.63	1.76

	RSW	Ratio	RSS	Ratio	RGW	RGW*	Ratio	All	All *
DAR Snapshot	20231	28.45%	5792	8.14%	45089	(43421)	63.41%	71112	(69444)
average nr. of workers on any one day									

	RSW	Ratio	RSS	Ratio	RGW	RGW*	Ratio	All	All *	Ratio
For DAR > 0	40984	26.49%	11930	7.71%	101775	(98010)	65.79%	154689	(150924)	
projected nr. of workers engaged in construction industry on any one day with card record	33830	26.24%	9630	7.47%	85478	(82316)	66.29%	128938	(125776)	83.35%
without card record	7154	27.78%	2300	8.93%	16297	(15694)	63.29%	25751	(25148)	16.65%

	RSW	Ratio	RSS	Ratio	RGW	RGW*	Ratio	All	All *	Ratio
For DAR = 0	33143	43.53%	4313	5.66%	38690	(34117)	50.81%	76146	(71573)	
projected nr. of workers engaged in construction industry	24823	46.19%	3149	5.86%	25766	(22720)	47.95%	53738	(50692)	
projected nr. of workers engaged in construction industry on any one day with card record	9302	47.36%	1319	6.72%	9018	(7952)	45.92%	19639	(18573)	36.55%
without card record	15521	45.52%	1830	5.37%	16748	(14768)	49.12%	34099	(32119)	63.45%

	RSW	Ratio	RSS	Ratio	RGW	RGW*	Ratio	All	All *	Ratio
Projected nr. of workers engaged in construction industry	90311	33.27%	19349	7.13%	161767	(152640)	59.60%	271427	(262300)	
on any one day with card record	43132	29.03%	10949	7.37%	94496	(90268)	63.60%	148577	(144349)	71.28%
on any one day without card record	22675	37.89%	4130	6.90%	33045	(30462)	55.21%	59850	(57267)	28.72%
Total	65807	31.57%	15079	7.23%	127541	(120730)	61.19%	208427	(201616)	

RGW claimed to be carrying out work with skill content

DAR>0

top 10 trades

		70037	56.90%
Electrical Fitter		9636	7.83%
Carpenter (Formwork)		6245	5.07%
Plasterer		5755	4.68%
Metal Worker		4684	3.81%
Plumber		4372	3.55%
Refrigeration/Air-conditioning/ Ventilation Mechanic		4372	3.55%
Leveller		3970	3.23%
Bar Bender and Fixer		3747	3.04%
Glazier		3167	2.57%
Painter and Decorator		3078	2.50%

DAR=0

top 10 trades

		23813	61.55%
Electrical Fitter		4959	12.82%
Painter and Decorator		3976	10.28%
Carpenter (Formwork)		2779	7.18%
Plasterer		1967	5.08%
Refrigeration/Air-conditioning/ Ventilation Mechanic		1967	5.08%
Metal Worker		1026	2.65%
Leveller		812	2.10%
Plumber		599	1.55%
Plant and Equipment Operator		428	1.10%
Mechanical Fitter		428	1.10%

DAR = 0 and NOT engaged in the construction industry

projected nr. of workers

RSW		RSS		RGW		All	
	28.72%		41.56%		63.85%		52.09%
13353	15.75%	3068	3.62%	68341	80.63%	84762	

main reasons for not engaged

	RSW	Ratio	RSS	Ratio	RGW	Ratio	All	
Retired	7447	55.77%	630	20.53%	18148	26.55%	26225	30.94%
Not suitable/no interest	587	4.40%	477	15.54%	12178	17.82%	13242	15.62%
Could not find work	1651	12.36%	612	19.94%	8214	12.02%	10477	12.36%
Not in the industry before	73	0.55%	63	2.05%	8740	12.79%	8876	10.47%
Health/family/study issues	1467	10.99%	270	8.80%	5015	7.34%	6752	7.97%
Old age	917	6.87%	198	6.45%	4537	6.64%	5652	6.67%
Work hardship	404	3.02%	270	8.80%	4441	6.50%	5115	6.03%
Wage low/not secured	257	1.92%	225	7.33%	1863	2.73%	2345	2.77%
Not enough work to do	367	2.75%	126	4.11%	1337	1.96%	1830	2.16%
Working location/time not suitable	73	0.55%	27	0.88%	1194	1.75%	1294	1.53%

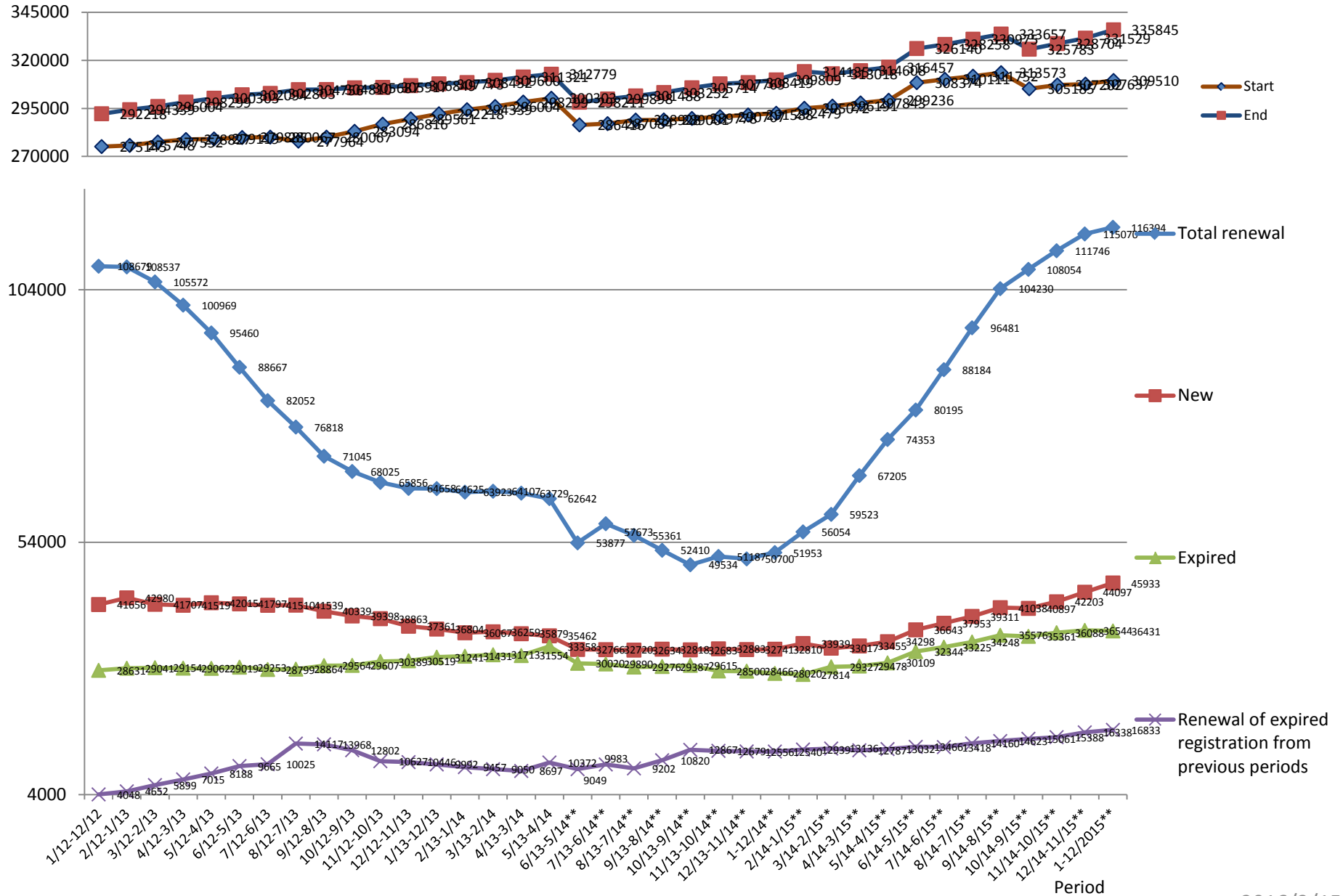
key factors claimed by latent workers to attract them to return to the industry

	RSW	Ratio	RSS	Ratio	RGW	Ratio	All	
Enough work to do	403	26.19%	126	16.28%	2344	22.90%	2873	22.89%
Higher wage	293	19.05%	226	29.07%	2009	19.63%	2528	20.14%
Could find work	37	2.38%	126	16.28%	1052	10.28%	1215	9.68%
Could not find other job opportunities	0	0.00%	45	5.81%	1005	9.81%	1050	8.37%
Better fringe benefits	110	7.14%	0	0.00%	622	6.07%	732	5.83%

* = exclude those not carrying out construction work such as security, safety, clerical personnel, etc.

Total registered workers (Rolling 12 months ending December 2012 – December 2015)

Number of workers

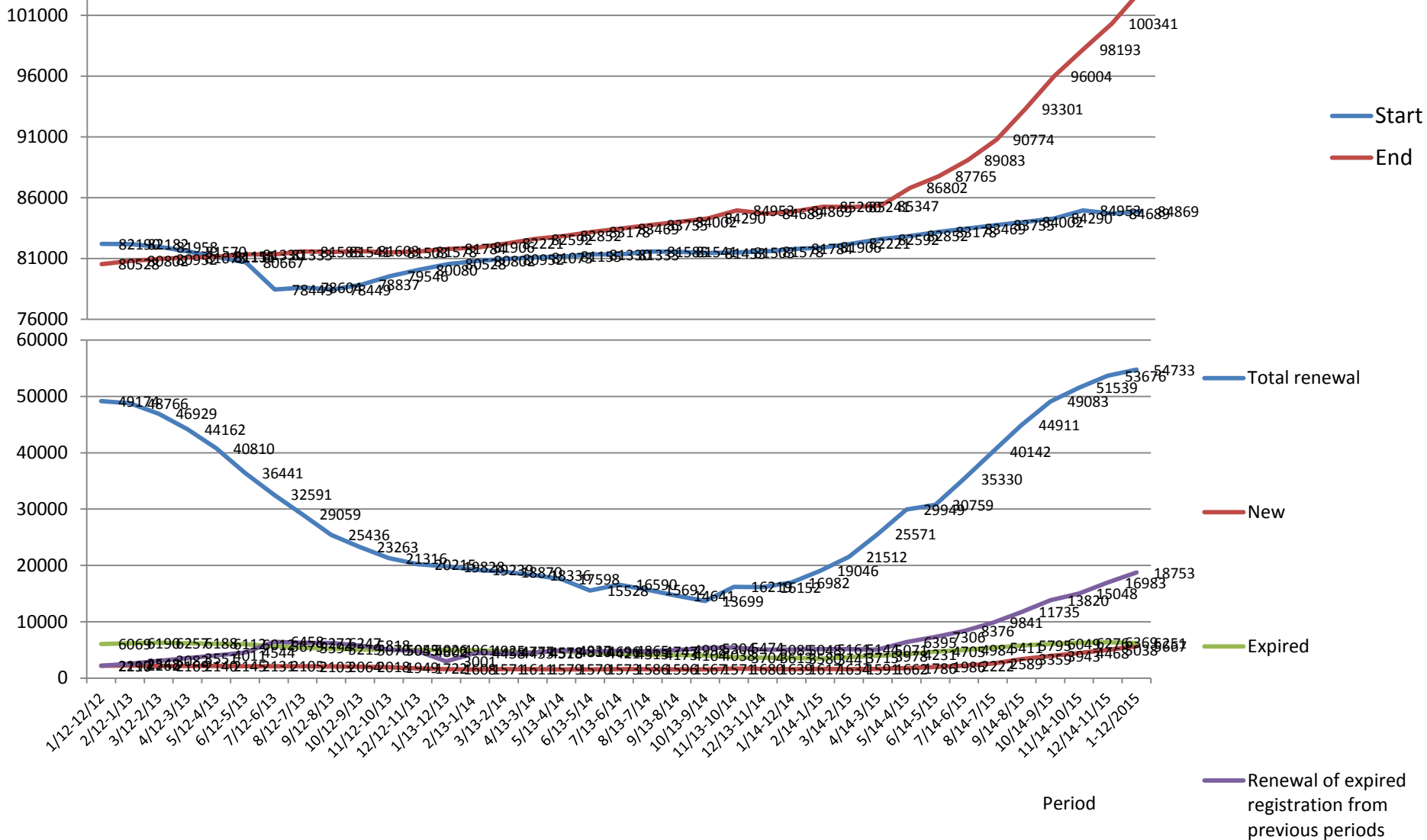


** exclude those not carrying out construction work such as security, safety, clerical personnel, etc.

Total registered skilled workers

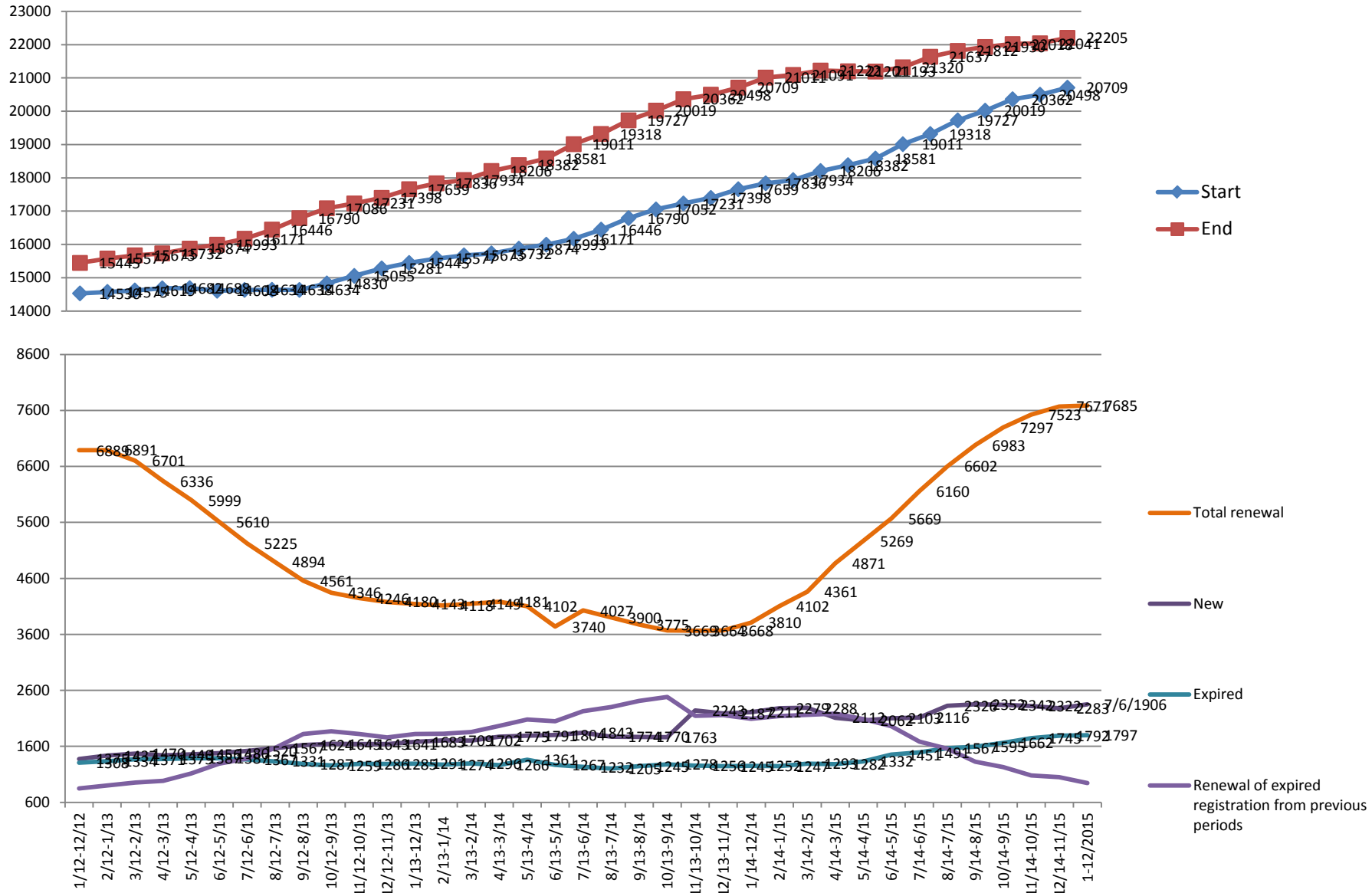
(Rolling 12 months ending December 2012 – December 2015)

Number of workers



Total registered semi-skilled workers (Rolling 12 months ending December 2012 – December 2015)

Number of workers

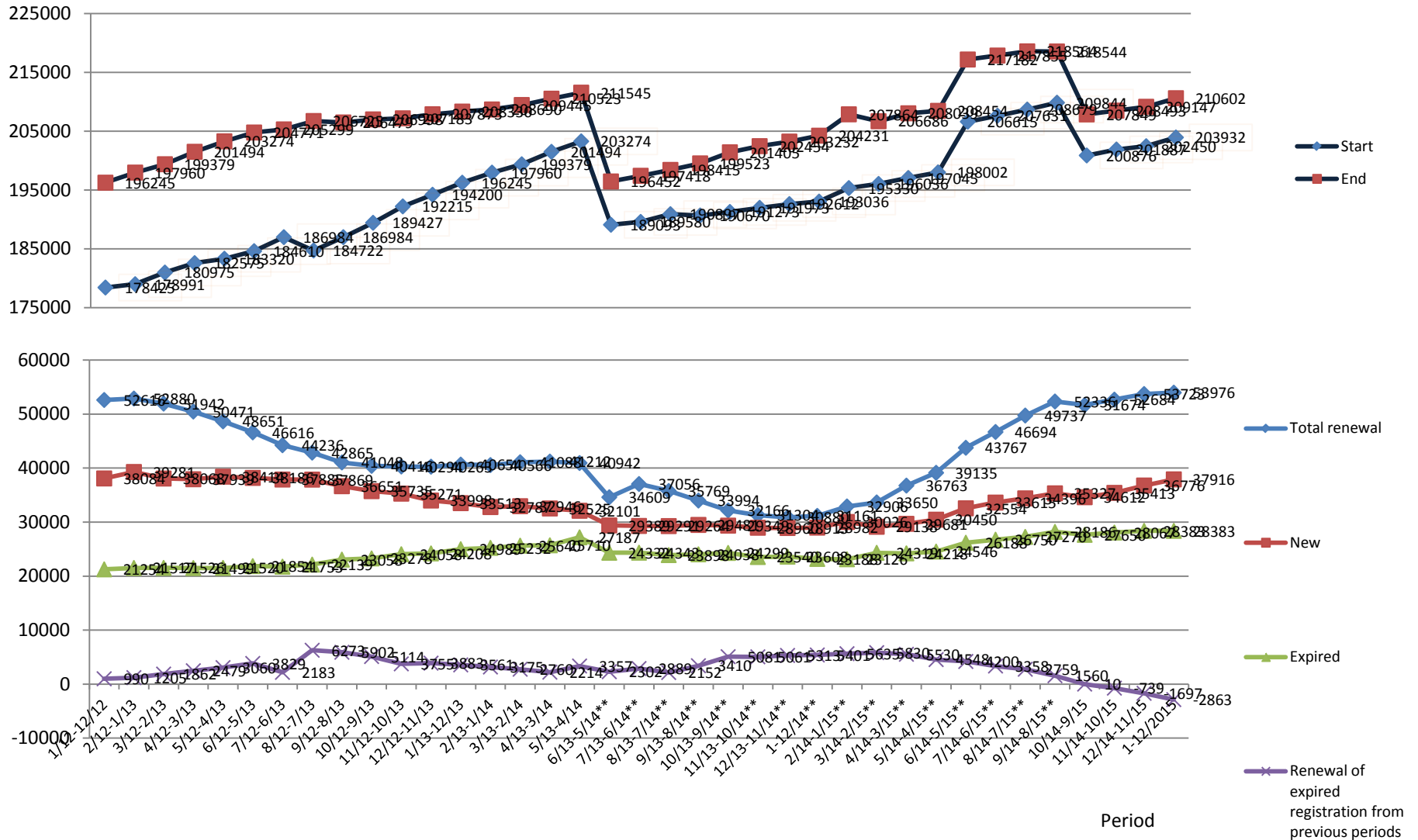


Period

2016/3/15

Total registered general workers (Rolling 12 months ending December 2012 – December 2015)

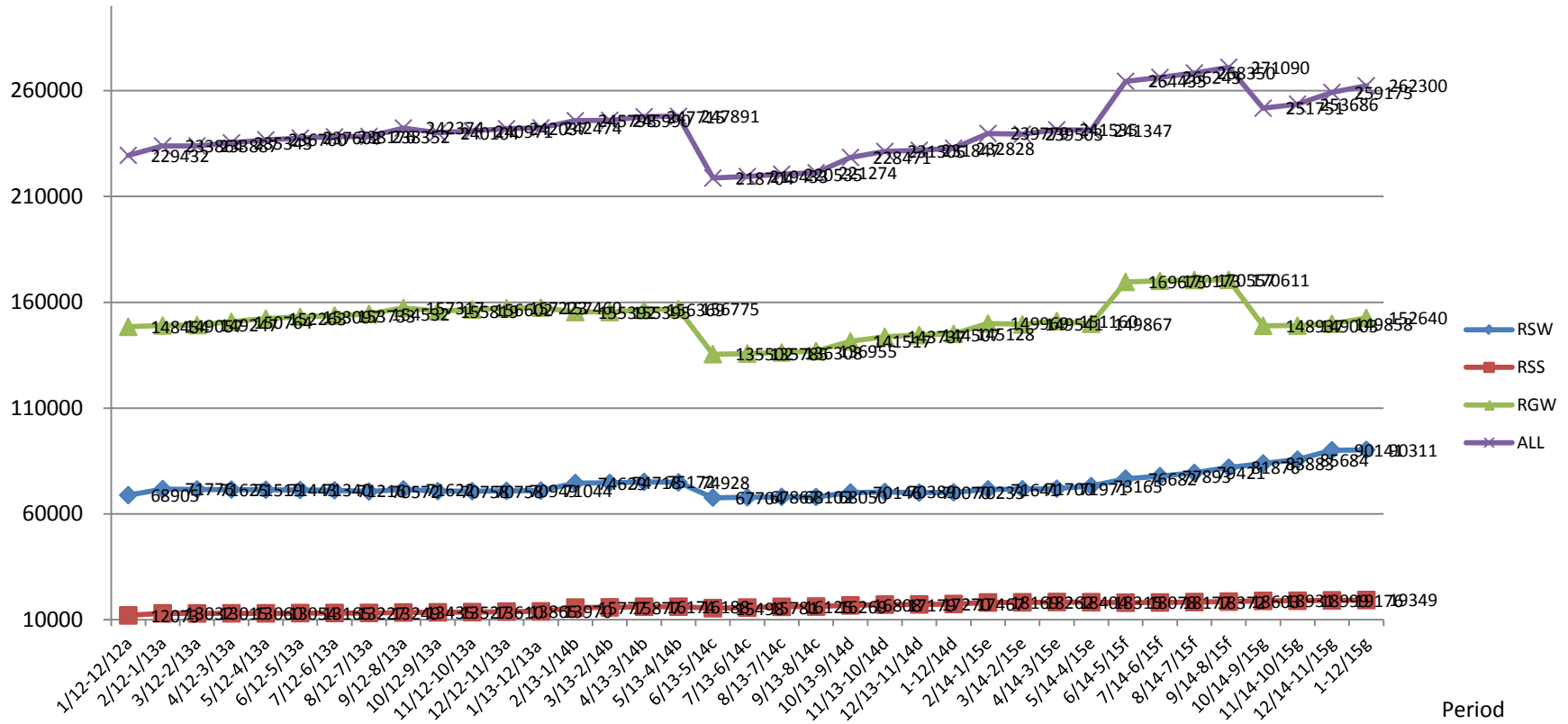
Number of workers



** exclude those not carrying out construction work such as security, safety, clerical personnel, etc.

Projected number of registered workers engaged in the construction industry (Rolling 12 months ending December 2012 – December 2015)

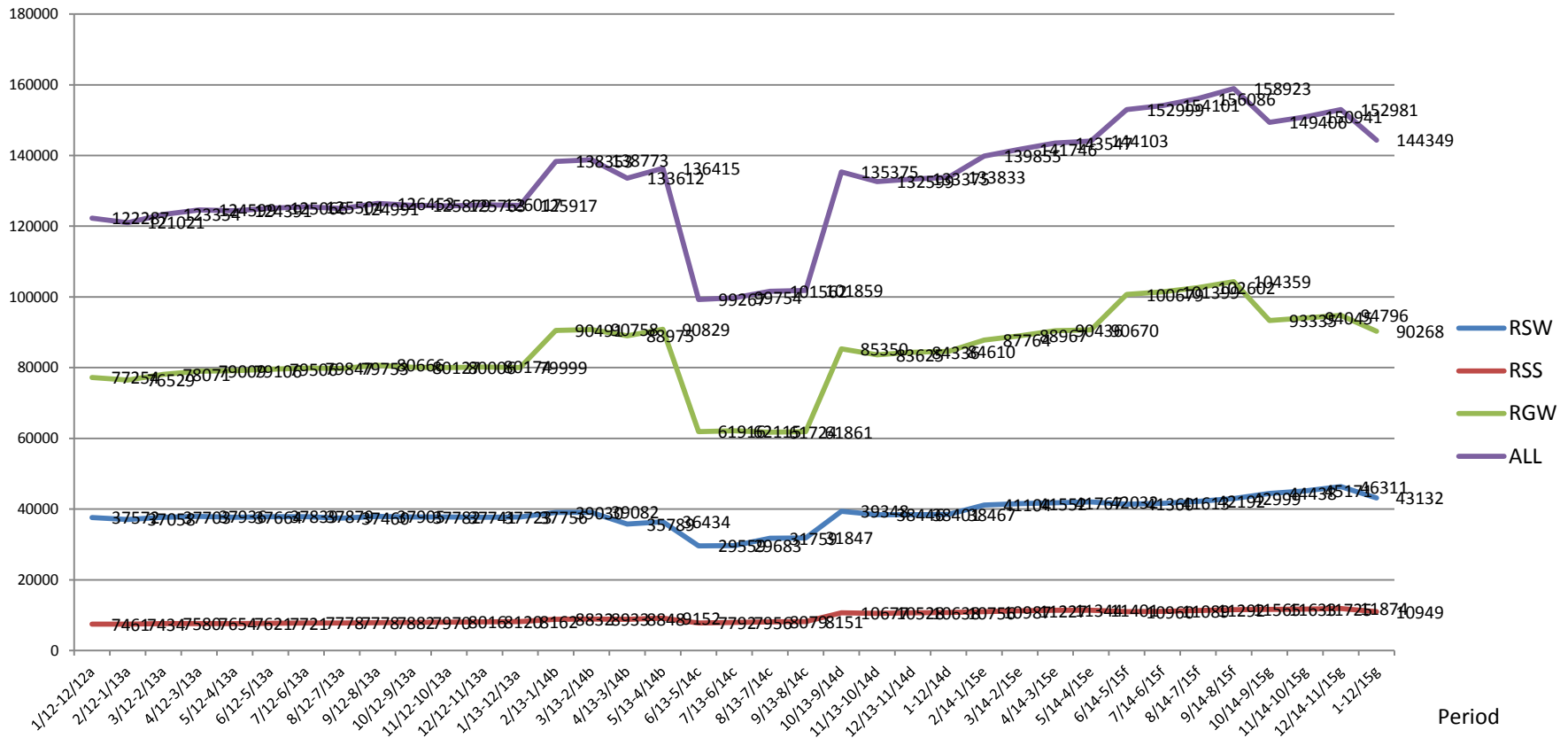
Number of workers



- a Survey (May-Sep 13) data
- b Survey (Dec 13-Apr 14) data
- c Survey (Jun-Aug 14) data + exclude those not carrying out construction work such as security, safety, clerical personnel, etc
- d Survey (Oct 14-Jan 15) data + exclude those not carrying out construction work such as security, safety, clerical personnel, etc.
- e Survey (Mar -May 15) data + exclude those not carrying out construction work such as security, safety, clerical personnel, etc.
- f Survey (Jun -Aug 15) data + exclude those not carrying out construction work such as security, safety, clerical personnel, etc.
- g Survey (Oct 15 -Jan 16) data + exclude those not carrying out construction work such as security, safety, clerical personnel, etc.

Projected number of registered workers engaged in the construction industry on any day with card record (Rolling 12 months ending December 2012 – December 2015)

Number of workers



a Survey (May-Sep 13) data

b Survey (Dec 13-Apr 14) data

c Survey (Jun-Aug 14) data + exclude those not carrying out construction work such as security, safety, clerical personnel, etc

d Survey (Oct 14-Jan 15) data + exclude those not carrying out construction work such as security, safety, clerical personnel, etc.

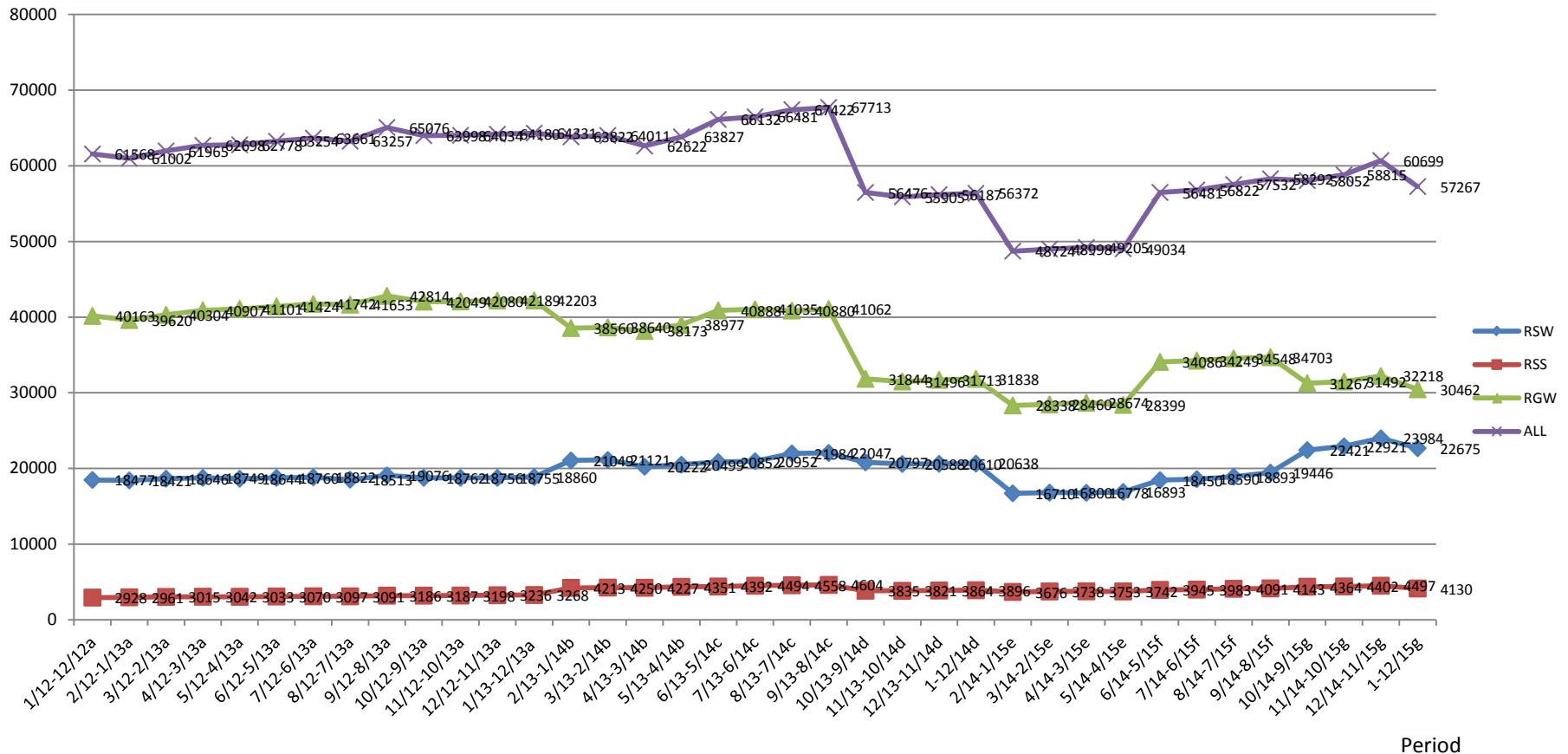
e Survey (Mar -May 15) data + exclude those not carrying out construction work such as security, safety, clerical personnel, etc.

f Survey (Jun -Aug 15) data + exclude those not carrying out construction work such as security, safety, clerical personnel, etc.

g Survey (Oct 15 -Jan 16) data + exclude those not carrying out construction work such as security, safety, clerical personnel, etc.

Projected number of registered workers engaged in the construction industry on any day without card record (Rolling 12 months ending December 2012 – December 2015)

Number of workers



a Survey (May-Sep 13) data

b Survey (Dec 13-Apr 14) data

c Survey (Jun-Aug 14) data + exclude those not carrying out construction work such as security, safety, clerical personnel, etc

d Survey (Oct 14-Jan 15) data + exclude those not carrying out construction work such as security, safety, clerical personnel, etc.

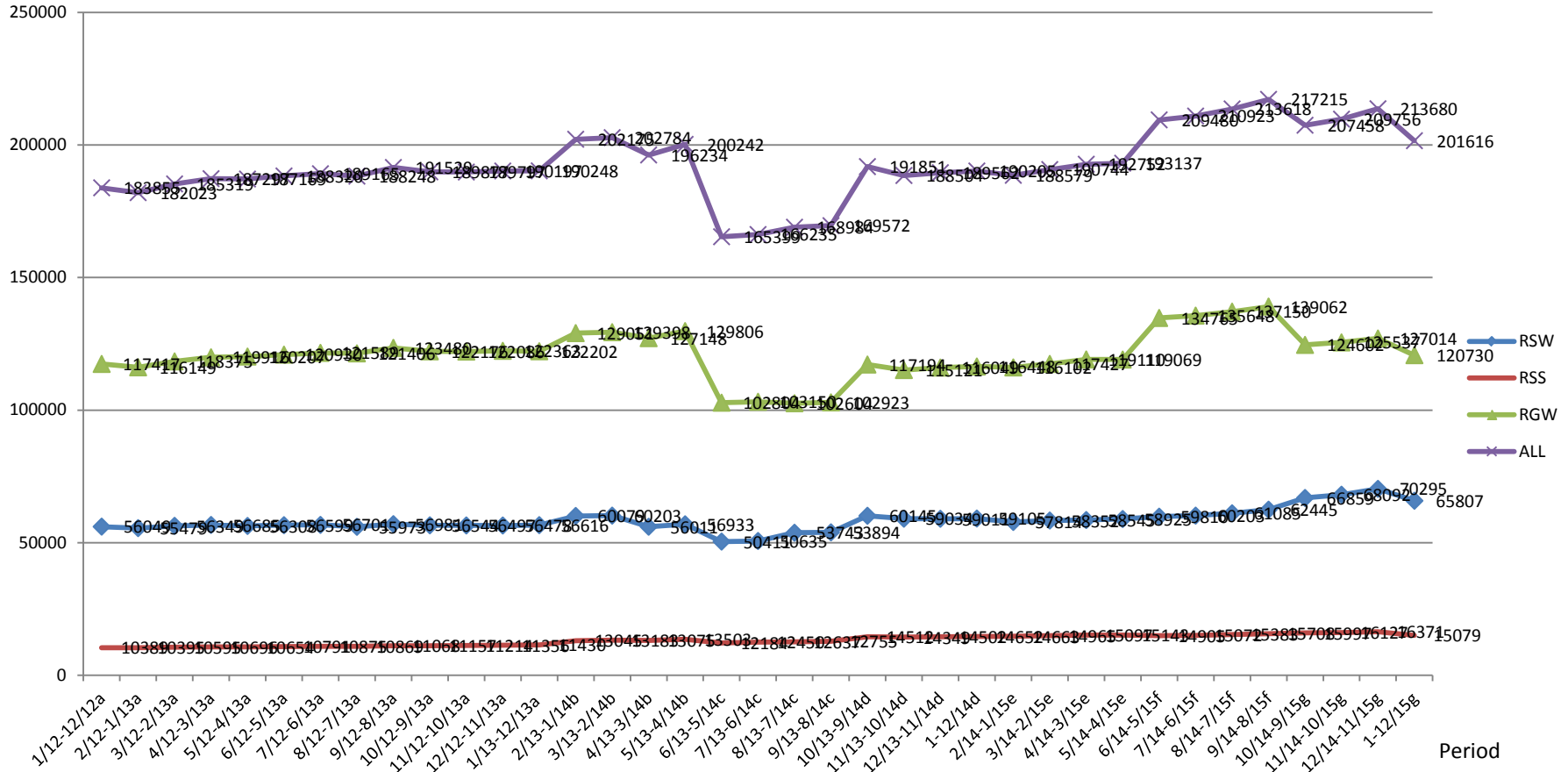
e Survey (Mar -May 15) data + exclude those not carrying out construction work such as security, safety, clerical personnel, etc.

f Survey (Jun -Aug 15) data + exclude those not carrying out construction work such as security, safety, clerical personnel, etc.

g Survey (Oct 15 -Jan 16) data + exclude those not carrying out construction work such as security, safety, clerical personnel, etc.

Projected number of total registered workers engaged in the construction industry on any day (Rolling 12 months ending December 2012 – December 2015)

Number of workers



a Survey (May-Sep 13) data

b Survey (Dec 13-Apr 14) data

c Survey (Jun-Aug 14) data + exclude those not carrying out construction work such as security, safety, clerical personnel, etc

d Survey (Oct 14-Jan 15) data + exclude those not carrying out construction work such as security, safety, clerical personnel, etc.

e Survey (Mar -May 15) data + exclude those not carrying out construction work such as security, safety, clerical personnel, etc.

f Survey (Jun -Aug 15) data + exclude those not carrying out construction work such as security, safety, clerical personnel, etc.

g Survey (Oct 15 -Jan 16) data + exclude those not carrying out construction work such as security, safety, clerical personnel, etc.