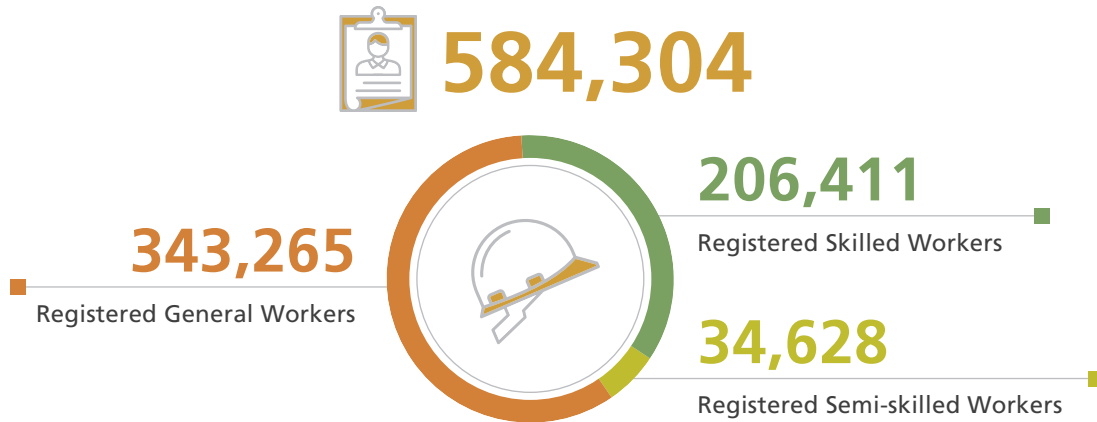


FIGURES AT A GLANCE IN 2021

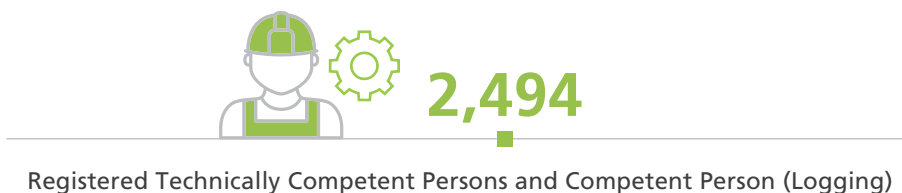
Registered Construction Workers



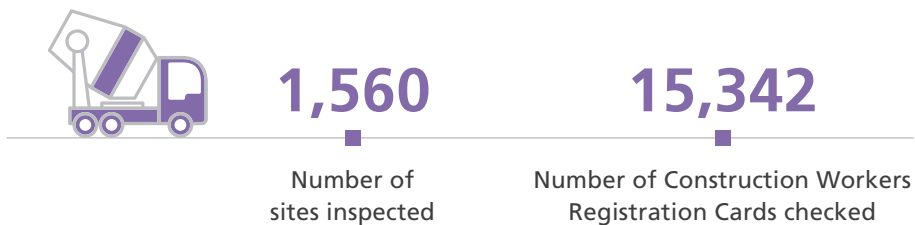
Registered Specialist Trade Contractors Scheme (RSTCS)



Technically Competent Persons Registration Scheme



Site Inspection and Enforcement





Levy Income

HK\$ 1,056,115,636



Trade Tests*

12,305

Number of trade tests conducted

* Including civil and building construction trade tests; construction-related electrical and mechanical trade tests and others.

Hong Kong Institute of Construction



66,012

Graduates#

Included full-time course, part-time course and collaboration scheme

Student Placement



88%

students were successfully placed within one month upon graduation

Urban Forestry Support Fund – Trainee Programme



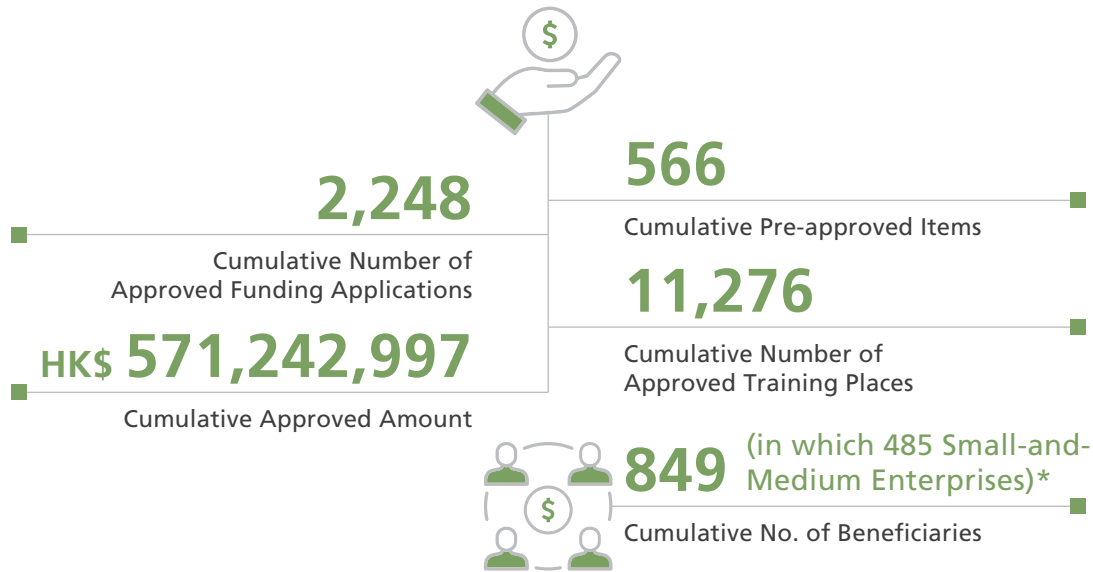
59

Arborist Trainee

22

Tree Climber Trainee

Construction Innovation and Technology Fund (CITF)



* Small-and-Medium Enterprises refer to organisations which employ fewer than 50 persons

CIC iHub



259,234 users (man time)#

Includes visitors, participants of guided tours, seminars, meetings, workshops of CIC-Zero Carbon Park, Construction Innovation and Technology Application Centre, MiC Resources Centre and CIC BIM Space etc.

Workers Welfare



HK\$ 308,000

Scholarship for Family Members of Registered Construction Workers

CIC Outreach Services Team



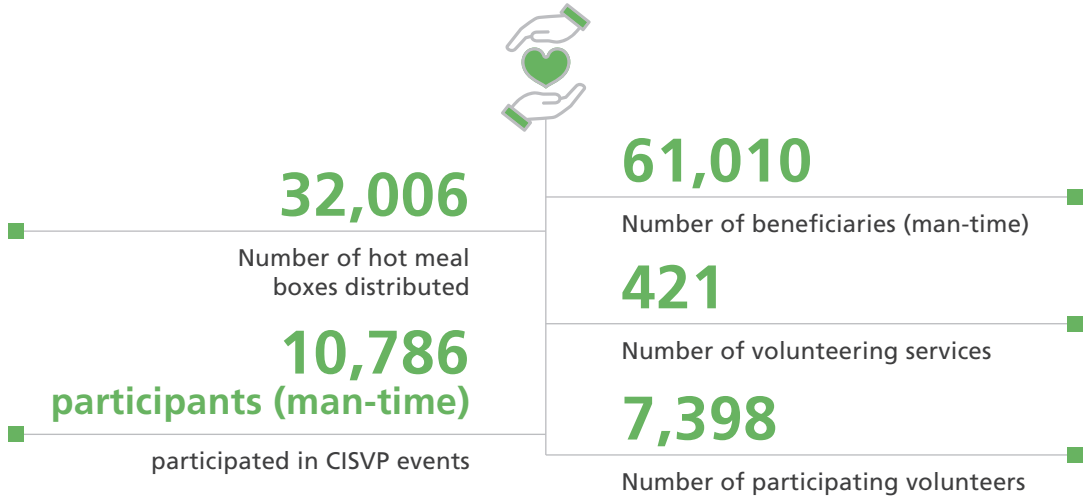
Over **6,883**

Number of workers (man-time) reached

117

Number of briefing sessions conducted

Construction Industry Sports and Volunteering Programme (CISVP)



Supported and Sponsored Events



A total of HK\$ **646,000** sponsoring **68** industry events

Construction Industry Caring Campaign – Fight against Novel Coronavirus



The campaign approved **4,062** applications from workers who were confirmed infected or under mandatory quarantine

A total of HK\$ **19,637,800** financial assistance was provided

CIC Relief Fund – Construction Business Support Scheme



1,987

applications approved

HK\$ **38,800,000**

financial assistance provided to SMEs of construction industry