



## **A WORKER WAS STRUCK TO DEATH BY I-BEAMS IN A WAREHOUSE AT YUEN LONG**

On 17 June 2024, a worker was struck by I-beams while working in a warehouse at Yuen Long. He was certified dead after sending to the hospital. The Construction Industry Council (CIC) would like to deliver this safety message for your attention. It would be appreciated if you could distribute the message below to your fellow members, relevant personnel or other industry stakeholders where appropriate. Thank you very much.

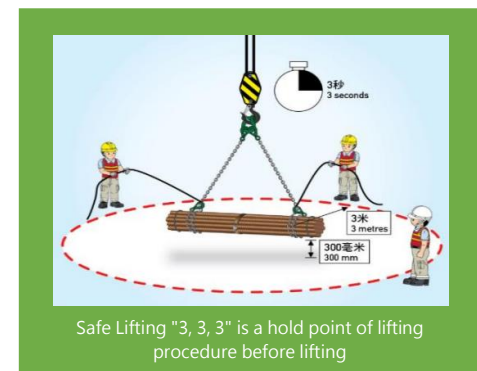
### **Common Accidents**

1. The workers do not stay away from fatal zone during the lifting operation.
2. Improper rigging methods, failure to secure the loads or unbalance of the loads.
3. Failure to stack the materials properly, and the materials overturn or dislocate.
4. Failure to provide necessary safety information, instructions, training and supervision to the workers concerned.
5. Failure to conduct dynamic risk assessments and take appropriate safety measures in response to changes in the environment.



### **Critical Control Measures**

1. Prior to the commencement of works, construction team should conduct risk assessments to identify the risks of falling objects in the site and the fatal zone; and formulate appropriate protective measures to eliminate or properly control the risks.
2. Strictly prohibit any workers from entering the fatal zone where risks of falling objects are foreseeable by, for example, cordoning or fencing off the areas.
3. Adopt proper rigging methods and make sure the load is securely fastened.
4. Implement Safe Lifting "3, 3, 3" as a hold point of lifting procedures before lifting: Keep 3m away from materials being lifted; lift up the materials 300mm from ground; and wait for 3 seconds for stabilising the lifting object before lifting operation.
5. Ensure that the materials are stored, stacked or handled on a flat, level and rigid surface.
6. Ensure that the materials are stored or stacked in a safe manner, or properly supported to prevent toppling.
7. Use appropriate Smart Site Safety System (4S) to strengthen safety management, for example: Install Dangerous Situation Alert System. If any person encroaching the dangerous area perimeter with the risk of being hit by falling objects, he/she will be alerted by the system.
8. Provide all workers concerned with the necessary safety information, instructions, training and supervision, and ensure that they are familiar with the safe work procedures of the lifting operation.



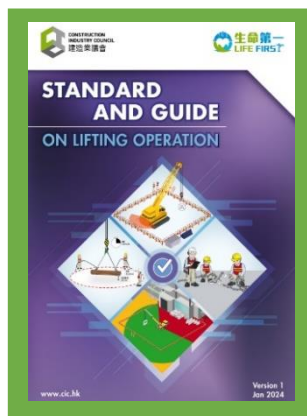


## SAFETY ROLES AND RESPONSIBILITIES OF KEY STAKEHOLDERS IN THE HONG KONG CONSTRUCTION INDUSTRY

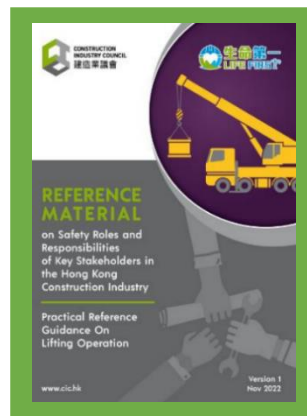
What if all stakeholders can act together and take one step further to fulfill their roles and responsibilities, can similar accident be avoided?

- In the design stage, engineers should consider the working environment of the operation zone, shape and stability of the materials being handled; and select appropriate lifting appliances, lifting gears and storage location in order to reduce risks from the sources.
- During the construction stage, construction team should plan, manage and monitor the lifting operation effectively; and appoint a competent and experienced lifting supervisor to oversee the lifting operation, including rigging/ unrigging of loads, to ensure that all risks are effectively eliminated or mitigated.
- The work team shall ensure the lifting zone is properly fenced off with barriers and prominent notices are provided to ensure no unauthorised entry into the zone; and ensure the materials are stored, stacked or handled on a flat and rigid surface.
- Workers can identify any changes in the construction process, report it to their supervisors and take action against it immediately.

### Reference information for sharing



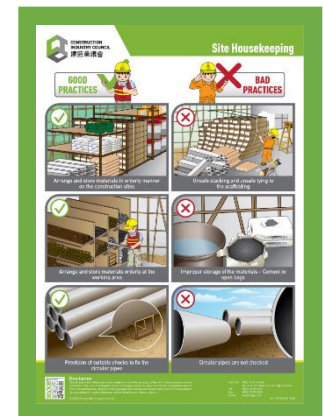
Standard and Guide on Lifting Operation



Reference Material on Safety Roles and Responsibilities of Key Stakeholders in the Hong Kong Construction Industry (Practical Reference Guidance On Lifting Operation)



Reference Material on Fatal Zone Management



Poster - Site Housekeeping



**Please Click the Image**



### Disclaimer

This message is not intended to constitute any professional advice on these or any other subjects. The CIC (including its members and employees) will not accept responsibility for any consequences resulting from the use of or failure to use this message. For enquiries, please contact 2100 9000.