



A WORKER FELL TO HIS DEATH AT A CONSTRUCTION SITE IN THE AIRPORT

On 7 November 2024, a worker was suspected of having fallen from height at a construction site in the airport. The worker was certified dead later in hospital. The Construction Industry Council (CIC) would like to deliver this safety message for your attention. It would be appreciated if you could distribute the message below to your fellow members, relevant personnel or other industry stakeholders where appropriate. Thank you very much.

Common Accidents

1. Failure to use proper working platform.
2. Fall from unprotected edge.
3. Fall from the opening reserved for the works.
4. PPE is not properly used and safety harness is not connected to the anchorage point.
5. Failure to conduct dynamic risk assessments and take appropriate safety measures in response to changes in the environment and procedures.

Critical Control Measures

1. Prior to the commencement of works, construction team should conduct risk assessments to identify the risks of falling from height, and formulate the safe working procedures.
2. Suitable working platforms should be provided and used for working at height.
3. For working environment where it is impracticable to provide suitable working platforms, it is a must to provide relevant workers with suitable full body safety harnesses and suitable anchor points, independent lifelines or fall arresting systems for continuous attachment of the safety harnesses.
4. Ensure guard-rails and toe-boards are provided at the floor edges.
5. Ensure the holes are securely covered and fenced off to prevent workers fall from height.
6. Use appropriate Smart Site Safety System (4S), for example, adopt Digitised Permit-to-work System for High-Risk Activities. Only after confirming that all necessary safety measures have been taken, the person in-charge of the work authorise workers to carry out the related high-risk activities.
7. Provide workers with the necessary safety information, instructions and training, and ensure that they are familiar with the safe working procedures and safety measures.
8. The work team should have developed an effective monitoring and supervision system to ensure compliance with the above measures.



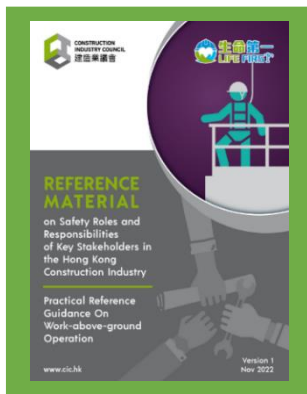


SAFETY ROLES AND RESPONSIBILITIES OF KEY STAKEHOLDERS IN THE HONG KONG CONSTRUCTION INDUSTRY

What if all stakeholders can act together and take one step further to fulfill their roles and responsibilities, can similar accident be avoided?

- In the design stage, designers and engineers should consider adopting design for safety methods to eliminate or reduce the working at height from the sources.
- During the construction stage, the work team should establish and implement an effective management system to ensure that the working platforms, personal protective equipment and fall arresting devices (e.g. independent lifeline) are inspected before work, ensuring that they are in good working order.
- The work team could constantly identify the changes in the process or the environment through dynamic risk assessment and apply control measures to eliminate the hazard.
- Workers should follow the developed safe working procedures, in case identifying any risks of falling from height, report it to their supervisors immediately.

Reference information for sharing



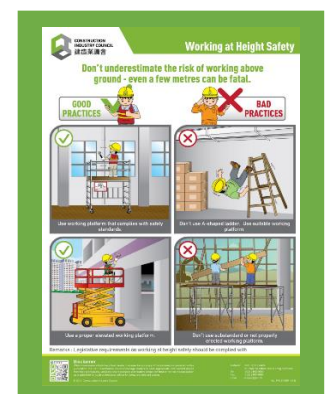
Reference Material on Safety Roles and Responsibilities of Key Stakeholders in the Hong Kong Construction Industry (Practical Reference Guidance On Work-above-ground Operation)



Guidelines on Work-above-ground Safety



Work-at-Height Safety Handbook



Poster - Working at Height Safety

 **Please Click the Images**



Disclaimer

This message is not intended to constitute any professional advice on these or any other subjects. The CIC (including its members and employees) will not accept responsibility for any consequences resulting from the use of or failure to use this message. For enquiries, please contact 2100 9000.