



A WORKER WAS TRAPPED BETWEEN A MOBILE ELEVATING WORK PLATFORM AND A BEAM AT A CONSTRUCTION SITE IN TUNG CHUNG

An accident happened on 22 November 2024 in which a worker while working on a mobile elevating work platform (MEWP) at a construction site in Tung Chung, was trapped between the platform and a beam. The worker was certified dead later in hospital. The Construction Industry Council (CIC) would like to deliver this safety message for your attention. It would be appreciated if you could distribute the message below to your fellow members, relevant personnel or other industry stakeholders where appropriate. Thank you very much.

Common Accidents

1. The operator being trapped between the MEWP and other fixed objects while the MEWP is moving or raising.
2. The operator accidentally contacts or improperly operates the control devices on the MEWP.
3. The operator operates the MEWP without receiving suitable training for that model.
4. Failure to operate the MEWP in accordance with the manufacturer's manual.
5. Failure to conduct dynamic risk assessments and not taking appropriate safety measures in response to changes in the surrounding environment and procedures.



Life First - Walk the Talk "Mobile Plant - Mobile Elevating Work Platforms" was held on 21 June 2023. Please click the above image to watch replay at the CIC website (Chinese Version only)

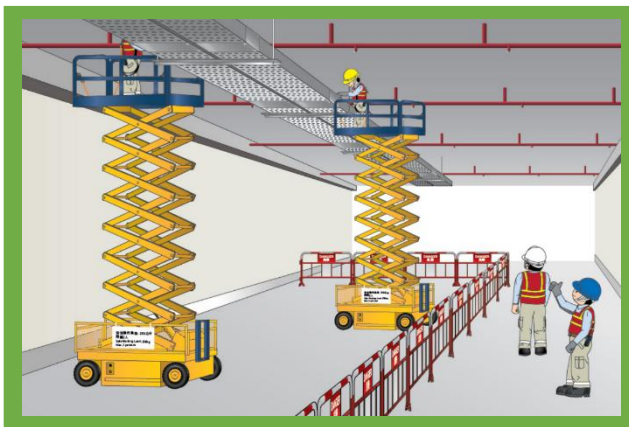
Critical Control Measures

1. Prior to the commencement of works, construction team should conduct dynamic risk assessments to identify all potential hazards associated with the work by taking into account the nature of works, the working environment, the ground condition and the limitations of the type of MEWP.
2. Formulate detailed safe working procedures with due regard to the result of the risk assessment, and in conformity with the instructions given in the machine manufacturer's manual.
3. A MEWP should only be operated by persons who have received suitable training for that model and are competent to operate the machine.
4. The function of each control device of the MEWP should be clearly indicated and marked on or beside the devices.
5. Before and while moving the MEWP, make sure there are no surrounding obstacles and no one is nearby. If necessary, the MEWP can be lowered to a safe position before continuing to move.
6. Consider installing appropriate secondary protection devices on the MEWP; for example, Tripping Device for stoppage. When a worker accidentally contacts the activation cable on the control panel, the ascending and driving functions on the platform will be immediately suspended, thereby reducing the risk of the worker being trapped by the platform.
7. Adopt safety technologies to enhance safety management and reduce risks, for example, install the Smart Sensor on the MEWP. When the MEWP is ascending and the worker's head is approaching an overhead obstacle, the siren from the system will be activated instantly, and the elevating operation will be suspended to safeguard the worker.
8. Provide workers with all necessary safety information, instructions and training, and ensure that they are familiar with safe working procedures, safety measures and operating the MEWP properly.



Reminders for Safe Use of MEWP

1. Establish a safe system of work for using the MEWP, including but not limited to the following:
 - Select a MEWP with due consideration to the reach limitation of the MEWP and its required clearance working space upon the specific model of the MEWP being used
 - Identify the risks of being trapped and crushed by MEWP for the various stages of work, including travelling to, moving to the workplace and undertaking tasks within the work area
 - Before raising or lowering the MEWP, make sure there is a sufficient safe distance between the obstacle and the MEWP
 - Establish emergency rescue plans
 - Establish and implement an effective monitoring and management system
2. Before the operation of MEWP, operators should have received appropriate training and be familiar with the operation for that specific model of MEWP.
3. Ensure that ground conditions are suitable for the operation of MEWP.
4. Ensure adequate lighting is provided while operating the MEWP.
5. At the beginning of each shift, physical and functional checks for the MEWP should be carried out.
6. Minimise distractions while operating the MEWP, such as avoid using mobile phones.
7. Ensure that hand and foot controls are not obstructed.
8. Maintain slow speed while travelling or moving a MEWP.
9. Do not override any controls, including its safety devices.
10. If there is any abnormal situation of the MEWP, workers should stop the work and report it to their supervisor immediately.



Before the operation of MEWP, Operators should have received appropriate training and be familiar with the operation for that specific model of MEWP



Maintain slow speed while travelling or moving a MEWP



SAFETY ROLES AND RESPONSIBILITIES OF KEY STAKEHOLDERS IN THE HONG KONG CONSTRUCTION INDUSTRY

What if all stakeholders can act together and take one step further to fulfill their roles and responsibilities, can similar accident be avoided?

- In the design stage, designers and engineers should consider the working environment of the operation zone and the risks nearby prior to the commencement of works, and select a suitable working platform and construction methods.
- During the construction stage, the work team must ensure that the MEWP is only operated by an authorised person who has adequately trained and is competent by reasons of substantial training and practical experience; in addition, make sure that the MEWP is regularly inspected, tested, and properly maintained in accordance with the manufacturer's instructions to ensure that it is in safe working condition at all times.
- The work team could constantly identify the changes in the process or the environment through dynamic risk assessment and apply control measures to eliminate the hazard.
- Before operating the MEWP, workers must be familiar with the control devices and their functions, as well as understand the relevant usage methods and emergency response procedures. When identifying any changes in the construction process, workers should report it to their supervisors and take action against it immediately.

Reference information for sharing



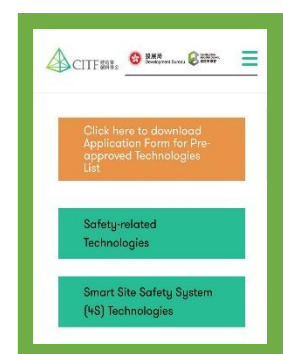
Work-at-Height Safety Handbook



Safety Poster - Pay Attention to Surrounding Obstacles Before Moving the Power-operated Elevating Work Platform (PEWP)!



Construction Innovation and Technology Fund (CITF)
Webpage - About CITF



Construction Innovation and Technology Fund (CITF)
Webpage - Smart Site Safety System (4S)



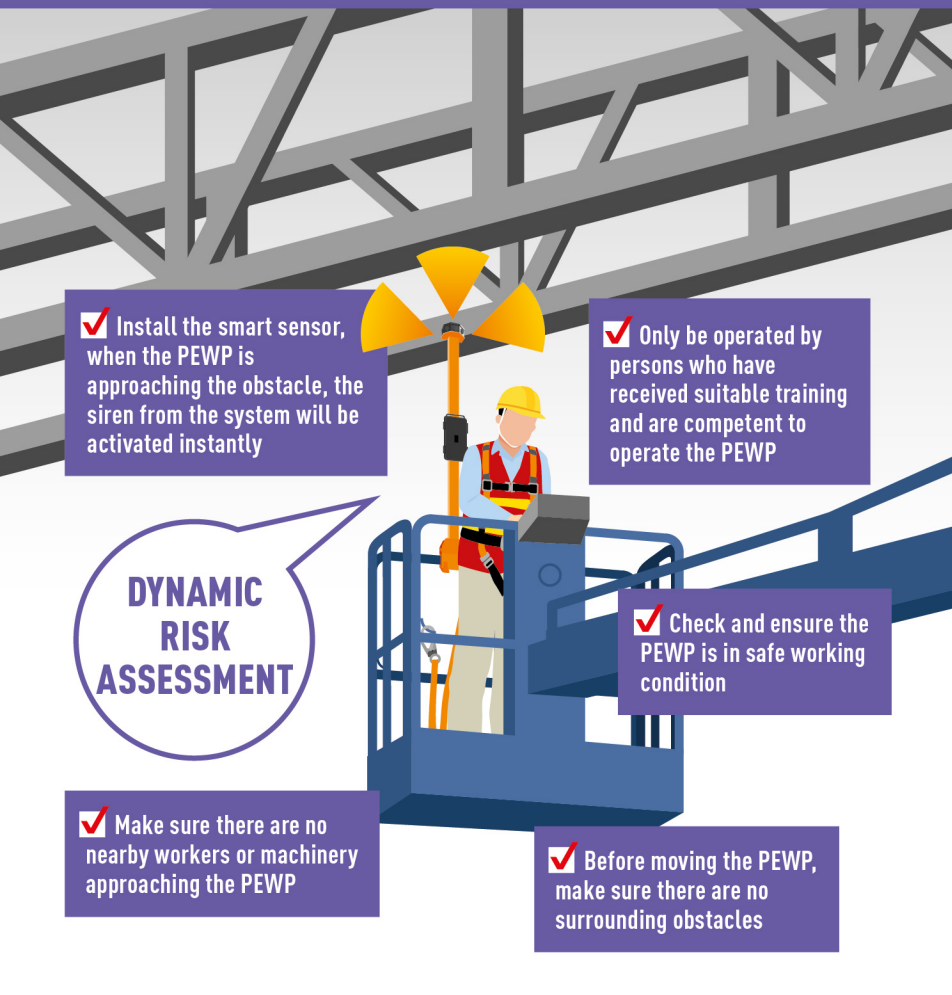
Please Click the Images



Disclaimer

This message is not intended to constitute any professional advice on these or any other subjects. The CIC (including its members and employees) will not accept responsibility for any consequences resulting from the use of or failure to use this message. For enquiries, please contact 2100 9000.

PAY ATTENTION TO SURROUNDING OBSTACLES BEFORE MOVING THE POWER-OPERATED ELEVATING WORK PLATFORM (PEWP)!



✓ Install the smart sensor, when the PEWP is approaching the obstacle, the siren from the system will be activated instantly

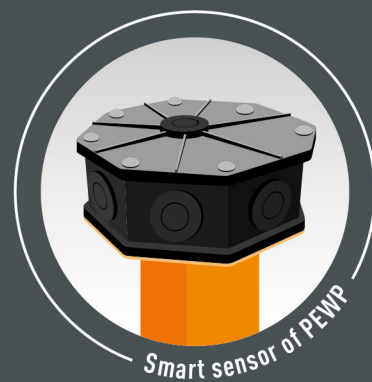
✓ Only be operated by persons who have received suitable training and are competent to operate the PEWP

**DYNAMIC
RISK
ASSESSMENT**

✓ Check and ensure the PEWP is in safe working condition

✓ Make sure there are no nearby workers or machinery approaching the PEWP

✓ Before moving the PEWP, make sure there are no surrounding obstacles



Reference Information

Construction Innovation and Technology Fund (CITF)
Webpage – About CITF

Construction Innovation and Technology Fund (CITF)
Webpage – Smart Site Safety System (4S)



Disclaimer

Whilst reasonable efforts have been made to ensure the accuracy of the information contained in this publication, the Construction Industry Council would encourage readers to seek appropriate independent advice from their professional advisers where possible and readers should not treat or rely on this publication as a substitute for such professional advice for taking any relevant actions.