



## A WORKER FELL TO HIS DEATH AT A HOUSE IN SHEUNG SHUI

On 16 May 2025, a worker fell from the top of a metal canopy while installing it at a house in Sheung Shui. The worker was certified dead in hospital later on the same day. The Construction Industry Council (CIC) would like to deliver this safety message for your attention. It would be appreciated if you could distribute the message below to your fellow members, relevant personnel or other industry stakeholders where appropriate. Thank you very much.

### Common Accidents

1. Fall from unprotected edge.
2. Failure to use proper working platform.
3. Personal Protective Equipment (PPE) is not properly used and safety harness is not connected to an anchorage point.
4. Failure to conduct dynamic risk assessments and take appropriate safety measures in response to changes in the environment and procedures.



### Critical Control Measures

1. Prior to the commencement of works, construction team should conduct risk assessments to identify the risks of falling from height and develop safe working procedures.
2. Ensure guard-rails and toe-boards are provided at the edges where there are risks of falling from height.
3. Suitable working platforms should be provided and used for working at height (e.g. mobile elevating work platform or metal scaffolds).
4. Whenever working environment is impracticable to provide suitable working platforms, it is a must to provide every worker with a suitable full-body safety harness and an anchorage system (e.g. a fixed anchor, an independent lifeline or a fall arresting system) for continuous attachment of the safety harness.
5. All anchorages should be designed to withstand a minimum pull-out force of 6 kN.
6. Safe access to and egress from place of work should be provided for the workers.
7. Use appropriate Smart Site Safety System (4S), for example, adopt Digitised Permit-to-work System for High-Risk Activities. The person in-charge of the work should only authorise workers to carry out the related high-risk activities after confirming that all necessary safety measures have been taken.
8. The work team should have developed an effective monitoring and supervision system to ensure compliance with the above measures.



CONSTRUCTION  
INDUSTRY COUNCIL  
建造業議會



## SAFETY ROLES AND RESPONSIBILITIES OF KEY STAKEHOLDERS IN THE HONG KONG CONSTRUCTION INDUSTRY

**What if all stakeholders can act together and take one step further to fulfill their roles and responsibilities, can similar accidents be avoided?**

- In the design stage, designers and engineers should take into accounts the work environment prior to the commencement of works; and select suitable working platforms and anchorage system.
- During the construction stage, the work team should establish and implement an effective management system to ensure that the working platforms, personal protective equipment and anchorages (e.g. independent lifeline) are inspected before work, ensuring that they are in good working order.
- The work team could constantly identify the changes in the process or the environment through dynamic risk assessment and apply control measures to eliminate the hazard.
- Workers should follow the developed safe working procedures, if any risks of falling from height is identified, report it to their supervisors immediately.

### Reference Information for Sharing



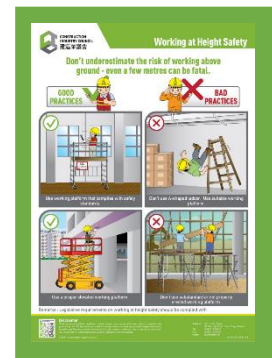
Guidelines on Work-Above-Ground Safety



Reference Material on Safety Roles and Responsibilities of Key Stakeholders in the Hong Kong Construction Industry (Practical Reference Guidance On Work-above-ground Operation)



Work at Height Safety Handbook



Poster - Working at Height Safety



**Please Click the Images**



### Disclaimer

This message is not intended to constitute any professional advice on these or any other subjects. The CIC (including its members and employees) will not accept responsibility for any consequences resulting from the use of or failure to use this message. For enquiries, please contact 2100 9000.