



COVID-19 and Respiratory Tract Infection

Maintain good personal hygiene

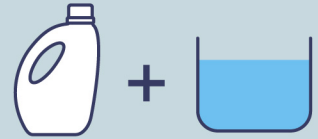
- Take temperature when access to construction sites
- Keep hands clean
- Wash hands with liquid soap and water, and rub for at least 20 seconds
- Perform hand hygiene with 70-80% alcohol-based handrub



Wear a surgical mask at work and in public places



- Cover your mouth and nose with tissue paper when sneezing or coughing
- Perform daily cleaning and disinfection with diluted household bleach



1 : 99

- Maintain social distancing. If having respiratory symptoms such as fever, wear a surgical mask and seek medical advice promptly

Maintain good workplace and washroom hygiene

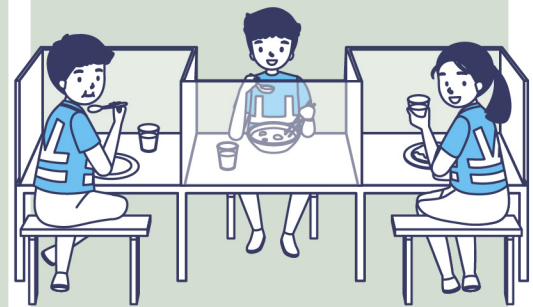
- Provide liquid soap and disposal paper towels in toilets
- Ensure the flushing system of the toilet is in proper function, and keep toilets clean and dry
- Maintain good ventilation at the workplace



Regularly pour water into each drain outlet (U-trap)



Arrange bulk orders of lunch boxes and flexible lunch hours to reduce social contact



Provide a hygienic, safe and comfortable lunch and resting area with good ventilation, tables and chairs, and drinking water

CHP hotline for COVID-19 cases:

2125 1111 / 2125 1122

For more information on tackling the disease:

www.chp.gov.hk



CONSTRUCTION
INDUSTRY COUNCIL
建造業議會