



Plasterer Trade Test Mock Written Test Paper

此文件關於批盪工工藝測試考題。如有需要索取此文件的中文版本，請致電 2100 9000 與香港建造業工藝測試中心聯絡。

Disclaimer

No part of this material may be reproduced or transmitted in any form or any means without the written permission of the CIC. Whilst reasonable efforts have been made to ensure the accuracy of the information contained in this material, the CIC nevertheless would encourage readers to seek appropriate independent advice from their professional advisers where possible and readers should not treat or rely on this material as a substitute for such professional advice for taking any relevant actions.

Enquiries

Enquiries on this Material may be made to the Hong Kong Construction Industry Trade Testing Centre at:

95, Yue Kwong Road
Aberdeen
Hong Kong

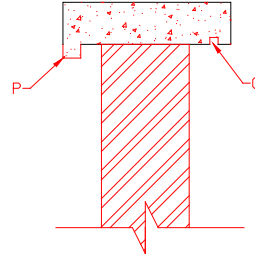
Tel: (852) 2100 9000
Fax: (852) 2100 9090
Email: enquiry@cic.hk
Website: www.cic.hk

© 2020 Construction Industry Council.

Interpretation of drawing, details and sketches

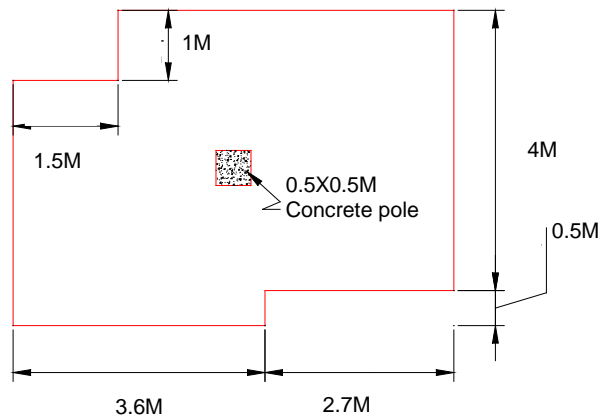
1. The part "P" of the wall capping is called:

- (a) joint
- (b) skirting
- (c) dripping eaves
- (d) dripping groove



2. The total length of 100mm high skirting, including all internal walls and columns, is:

- (a) 23.6M
- (b) 24.7M
- (c) 25.8M
- (d) 26.9M



Interpretation of Specifications

3. Spatterdash should be applied to the concrete surfaces:

- (a) Immediately after striking formwork
- (b) 7 days after striking formwork
- (c) 14 days after striking formwork
- (d) 28 days after striking formwork

4. After adding hydrated lime to water, how long has to be waited use?

- (a) 24 hours
- (b) 32 hours
- (c) 48 hours
- (d) 64 hours

5. The mix ratio of cement, lime and sand mortar for external render should be:
- (a) 1 : 1 : 2
 - (b) 1 : 1 : 4
 - (c) 1 : 2 : 6
 - (d) 1 : 2 : 8
6. The width of fibre mesh to cover the joint between 2 gypsum boards should not be less than:
- (a) 30 mm
 - (b) 50mm
 - (c) 70mm
 - (d) 90mm

Working Procedure

7. The purpose of wetting the surface before plastering is to :
- (a) increase the workability
 - (b) speed up the mortar setting
 - (c) test the wall leakage
 - (d) reduce the water lost from mortar
8. To roughen the c/s external render is mainly by:
- (a) flushing with water
 - (b) sweeping by broom
 - (c) scrap by stiff brush
 - (d) grinding by grinder
9. The function of dripping eaves is to:
- (a) prevent external wall leakage
 - (b) prevent external wall from pollution
 - (c) decorate the rendering
 - (d) stop the rainwater flow inward

10. Before floor screeding, the concrete surface should be cleaned and prime with cement slurry .It aims to :
- (a) facilitate proceeding of works
 - (b) save up materials to be consumed
 - (c) enforce the bonding between screeding and concrete bed
 - (d) obtain an even and flat floor surface

Handling of materials

11. A tool called plasterer's hawk is used to:
- (a) setting out and positioning
 - (b) smoothing wall surfaces
 - (c) resting rendering mortar
 - (d) casting rough surface
12. A tool used in casting of arris (external angle) is called:
- (a) steel bar
 - (b) coved towel
 - (c) angle float
 - (d) driange towel
13. How to handle the c/s mortar which has been initial set?
- (a) add some water and overmix it
 - (b) use it up as fast as possible
 - (c) dispose those mortar
 - (d) make it as undercoat mortar

14. The function of a dividing strip used for granolithic finishing is:

- A ease for works
- B to facilitate for maintenance
- C prevention from cracking
- D for making graphic pattern

- (a) A , B , D
- (b) A , C , D
- (c) B , C , D
- (d) A , B , C , D

15. To add carborundum into render for stair nosing is to:

- (a) reduce slipperiness
- (b) reduce pressure
- (c) minimize explosion
- (d) prevent from leakage

Safety measure and precaution taken

16. According to ordinance, every person in construction sites shall wear:

- (a) cotton gloves
- (b) rubber gloves
- (c) safety helmet
- (d) safety belt

17. Which of the following personal protective equipment is used to protect against noise hazard?

- (a) safety belt
- (b) safety helmet
- (c) ear protector
- (d) safety goggles

18. While manual lifting of heavy load, which one of following applications shall consider first:

- (a) keep the back straight
- (b) consult colleagues to assist
- (c) use lifting machinery instead
- (d) manual handling personally

19. What working environment could lead to sunstroke?

- (a) workplace without air conditioner
- (b) in high temperature and humidity workplace
- (c) workplace without sunshelter
- (d) working in cloudy days

20. When can we work under suspended load?

- (a) do not do like that
- (b) after put on a reflective coat
- (c) under direction by signaller
- (d) as the load at height without swinging