



建業建榮控股有限公司

CHINNEY KIN WING HOLDINGS LIMITED

CEO建造安全論壇 2025

CEO Safety Forum 2025

林凱帆, James (董事)

建業建榮控股有限公司



建業建榮控股有限公司

CHINNEY KIN WING HOLDINGS LIMITED

# 建造業安全領導文化

林凱帆, James (董事)

建業建榮控股有限公司



建業建榮控股有限公司  
CHINNEY KIN WING HOLDINGS LIMITED

## 公司簡介

- 成立於一九九四年；
- 包括：建榮、鑽達及永峰；
- 約700多名員工；
- 從事各類地基工程、鑽探、場地勘探及地盤平整；
- 獲屋宇署、發展局工務科及房屋委員會納入  
認可專門承造商名冊。



建業建榮控股有限公司

CHINNEY KIN WING HOLDINGS LIMITED

## 公司安全核心價值



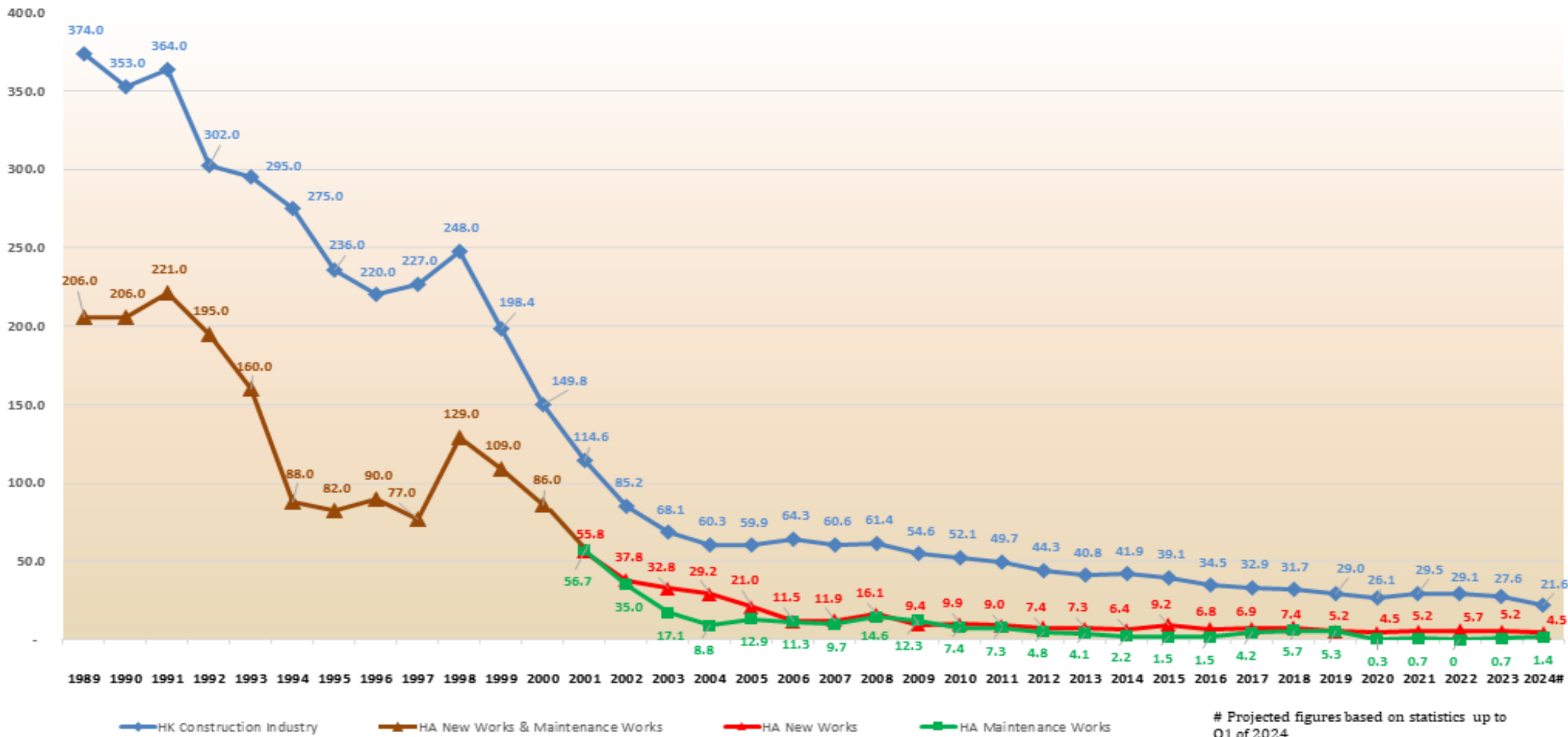


建業建榮控股有限公司

CHINNEY KIN WING HOLDINGS LIMITED

# 過去工傷統計數字

### Accident Rate per 1000 Workers (All years)





建業建榮控股有限公司  
CHINNEY KIN WING HOLDINGS LIMITED

工傷數字為何未能降低?

原因?瓶頸?





建業建榮控股有限公司  
CHINNEY KIN WING HOLDINGS LIMITED

改善現有方法 = 改變現有結果?



點做??





# 建業建榮控股有限公司

## CHINNEY KIN WING HOLDINGS LIMITED

用工地安全四寶改變現況:

1. 標準化施工方案/流程
2. 優化風險評估/實施動態風險評估
3. 適切培訓
4. 以4S輔助監督

K 建榮地基  
KIN WING

DRILTECH

EVEREST  
engineering

### 工地安全四寶





建業建榮控股有限公司

CHINNEY KIN WING HOLDINGS LIMITED

# 優化風險評估/ 實施動態風險評估

# 風險評估

Item 項目	Activities 工 序 / 地點 Locations	Hazard 危害	Degree 程度			Control Measures 控制措施	Action 執行	Personal Protective Equipment 個人防護用具	Tool box talk training 安全訓練	Priority 次序	Residual Risk 剩餘風險		
			L 可能性	C 嚴重性	R 風險						L 可能性	C 嚴重性	R 風險
1	Excavation for reservation tube	Falling object	4	X	2 = 8	<ol style="list-style-type: none"> <li>1. Keep heavy materials or machinery away from the edge of pit.</li> <li>2. Keep stacking of bulk soil, boulders and tools away from the edge of pit.</li> <li>3. Rigid barricades should be provided to fence off the pit.</li> <li>4. Display warning notice on the barricades.</li> </ol>	Workers, General Foremen	Safety boots, reflective vest, safety helmet	Material stacking	M	1	X	2 = 2
		Concrete flying fragment hazard while breaking the concrete by hydraulic breaker.	4	X	2 = 8	<ol style="list-style-type: none"> <li>1. The trimming zone should be fenced off to prevent unauthorized entry.</li> <li>2. Warning signs shall be displayed to alert worker for the flying fragment hazard.</li> <li>3. Suitable eye goggles shall be wore by worker working within the breaking zone.</li> </ol>	General Foreman, Worker, Safety Officer, Asst Safety Officer	Safety Goggles,	Eye protection	M	1	X	2 = 2
2	Setting out the correct location of the drilling rig on site.	Person injury may cause by the site mobilization.	4	X	3 = 12	<ol style="list-style-type: none"> <li>1. First aid box should be prepared on site.</li> <li>2. First aider also should be appointed.</li> <li>3. All workers on site should be worn reflective jackets, safety boots and safety helmets on site.</li> <li>4. Provide safe access to workplace.</li> <li>5. Safety training should be provided before commencement of works.</li> </ol>	General Foremen, Operator, Safety Officer	Safety boots, reflective jacket, safety helmet	First Aid, Proper use of PPE	M	1	X	3 = 3

\*已審批的風險評估

# 風險評估

Item 項目	Activities 工 序 / 地點 Locations	Hazard 危害	Degree 程度			Control Measures 控制措施	Action 執行	Personal Protective Equipment 個人防護用具	Tool box talk training 安全訓練	Priority 次序	Residual Risk 剩餘風險						
			L	C	R						L	C	R				
			可能性	嚴重性	風險						可能性	嚴重性	風險				
		Falling object during lifting drilling rig	2	X	4	=	8	1. All workers involved in handling of objects to be lifted by examined lifting appliance and lifting gear. 2. Colour Code system should be implemented to alert the workers for the expired date of lifting gear. 3. To fence off the lifting area to prohibit any person stay or across the lifting object. 4. Banksman should be appointed for assisting the lifting operation	General Foremen, Operator, Banksman	Nil	Lifting operation safety, Signaling	M	1	X	4	=	4
		Struck by crane lorry	4	X	3	=	12	1. The banksman and crane operator will be appointed and authorized to conduct their duties. 2. Set up speed limit in work site.	General Foremen, Operator, Banksman	Nil	Road safety	M	1	X	3	=	3
		Tripping / slipping hazard	3	X	3	=	9	1. Water hose should be maintained or hung up to prevent tripping 2. Dry condition should be kept to prevent slipping.	Workers, Operator, General Foremen	Nil	House Keeping	M	1	X	3	=	3

\*已審批的風險評估

# 風險評估

Item 項目	Activities 工序 / 地點 Locations	Hazard 危害	Degree 程度			Control Measures 控制措施	Action 執行	Personal Protective Equiment 個人防護用具	Tool box talk training 安全訓練	Priority 次序	Residual Risk 剩餘風險		
			L 可能性	C 嚴重性	R 風險						L 可能性	C 嚴重性	R 風險
		Fall of person	3	X 4	= 12	<ol style="list-style-type: none"> <li>1. Safe working platform or certified man-cage should be provided for working at height when setting up the wastewater treatment plant.</li> <li>2. Safety harness attached to anchorage point such as independent lifelines should be provided for working at height where the provision/ use of working platform or man-cage is not practicable.</li> <li>3. Safe means of access (i.e. access ladder) in good working conditions should be provided for accessing place of height.</li> </ol>	Sub Agent Foreman Rigger Worker Fitter	Safety harness	Working platform  Ladder  PPE(safety harness)	M	1	x 4	= 4

\*已審批的風險評估



建業建榮控股有限公司

CHINNEY KIN WING HOLDINGS LIMITED

# 施工方案





建業建榮控股有限公司

CHINNEY KIN WING HOLDINGS LIMITED

# 施工方案



唔好爬!!!  
落返黎!!!  
監管/吸住





建業建榮控股有限公司

CHINNEY KIN WING HOLDINGS LIMITED

# 施工方案



著安全帶  
先好上去

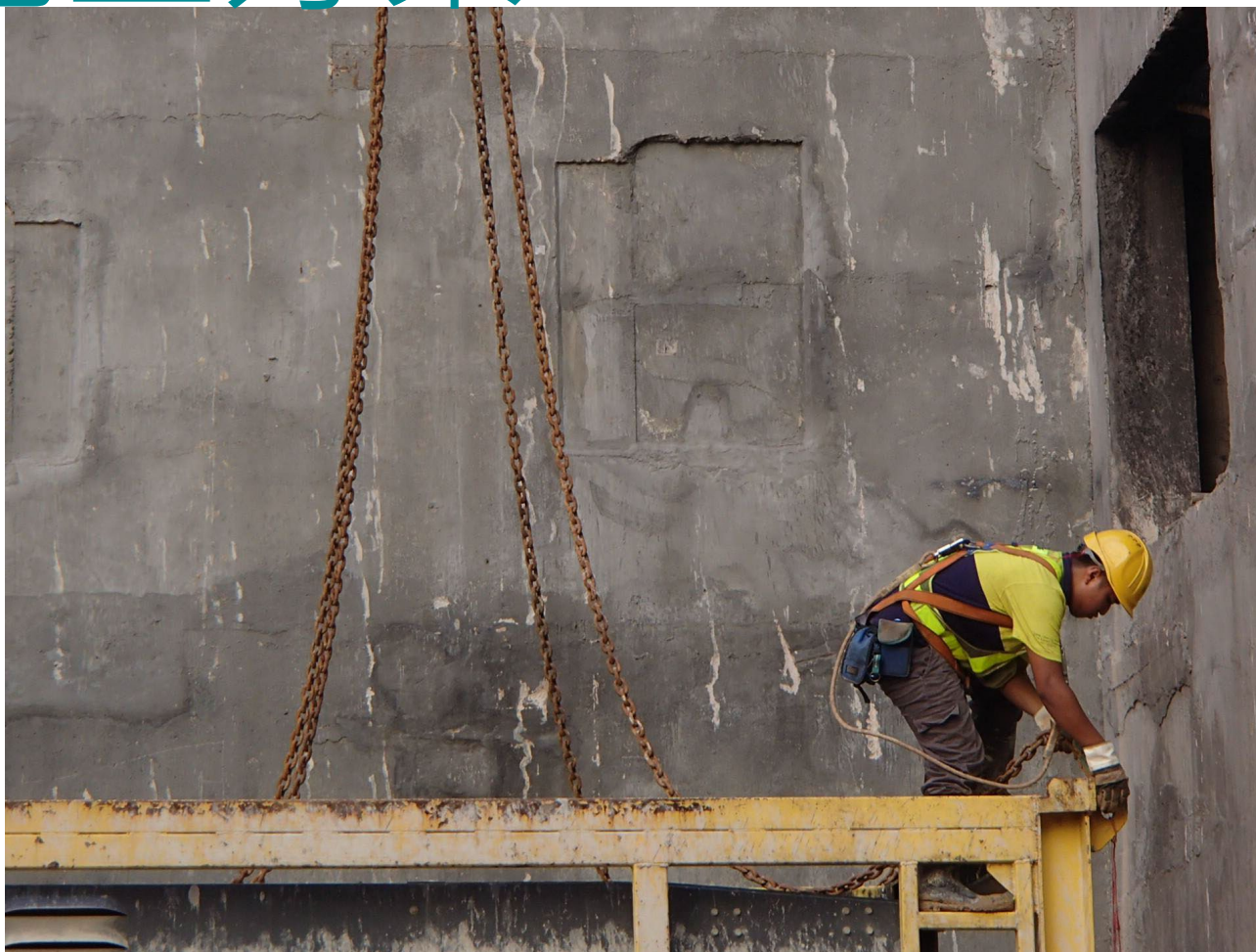




建業建榮控股有限公司

CHINNEY KIN WING HOLDINGS LIMITED

# 施工方案



安全帶扣邊度？  
高掛低用？



建業建榮控股有限公司

CHINNEY KIN WING HOLDINGS LIMITED

# 施工方案

駁條水喉好簡單啫





建業建榮控股有限公司

CHINNEY KIN WING HOLDINGS LIMITED

# 施工方案







建業建榮控股有限公司

CHINNEY KIN WING HOLDINGS LIMITED

# 施工方案



Design for Safety  
貼地/易執行



建業建榮控股有限公司

CHINNEY KIN WING HOLDINGS LIMITED

# 施工方案



工友責任?  
領導責任?

領導要熟識  
及改善工序





建業建榮控股有限公司

CHINNEY KIN WING HOLDINGS LIMITED

# 適切培訓

有設備 ≠ 識得用







建業建榮控股有限公司

CHINNEY KIN WING HOLDINGS LIMITED

# 適切培訓



提供培訓



建業建榮控股有限公司

CHINNEY KIN WING HOLDINGS LIMITED

工人行為?





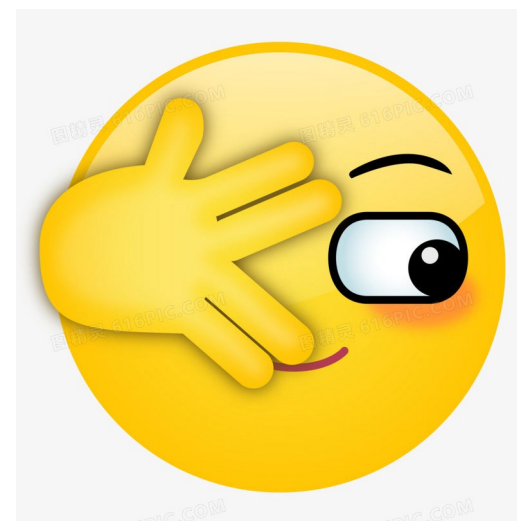


建業建榮控股有限公司  
CHINNEY KIN WING HOLDINGS LIMITED

監管



唔啱插?







建業建榮控股有限公司  
CHINNEY KIN WING HOLDINGS LIMITED

監管

有方法!





建業建榮控股有限公司

CHINNEY KIN WING HOLDINGS LIMITED

監管

Design for Safety 都未夠

監管

人盯人 - 唔實際

所以要搵科技幫下手, 例如: Camera







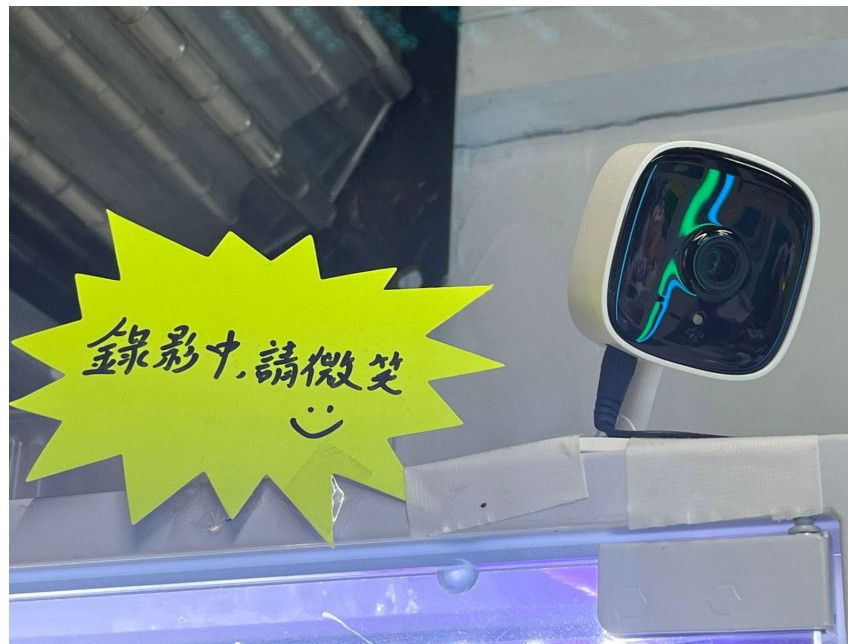
建業建榮控股有限公司

CHINNEY KIN WING HOLDINGS LIMITED

# 監管



新一代偵速攝影機





建業建榮控股有限公司

CHINNEY KIN WING HOLDINGS LIMITED

## 總結

- 施工方案
- (接地)風險評估
- 監管





建業建榮控股有限公司

CHINNEY KIN WING HOLDINGS LIMITED

有四寶，無煩惱！



建業建榮控股有限公司  
CHINNEY KIN WING HOLDINGS LIMITED

## 未來方向

- 2025施工方案 / Design for Safety
- Dynamic Risk Assessment
- Training
- Supervision by the help of Smart Site Safety System



建業建榮控股有限公司

CHINNEY KIN WING HOLDINGS LIMITED

祝各位

快樂上班，平安回家!



建業建榮控股有限公司

CHINNEY KIN WING HOLDINGS LIMITED

最後，再送上一條由我們所拍攝  
的微電影－  
“承諾”

